



Industry Mining & Metals

Geography Australia

Members

Under 10,000

Under 20,000

Under 50,000

50,000+

INDUSTRY TALENT REPORT

EMPLOYMENT TRENDS

+0.2%

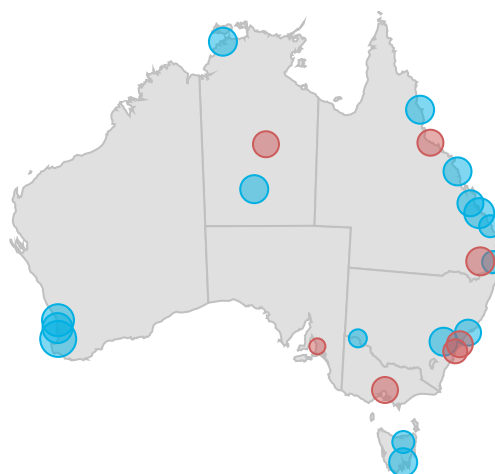
Employment of Mining & Metals industry professionals in Australia grew by +0.2% over the past year

LinkedIn Industry Talent Report

- With more than 450M+ members in over 200 countries/territories, LinkedIn has the ability to analyze professional movement. This report shows you the macro-trends within an industry through the lens of LinkedIn data.
- We hope these insights help to inform your data-driven hiring & planning decisions. You can use this report to stay up-to-date on what movement looks like within a specific industry and how to engage these professionals.

EMPLOYMENT GROWTH IN AUSTRALIA top regional growth in the Mining & Metals industry

- 1 Western Australia, AU +10%
- 2 Perth, AU +5.9%
- 3 Queensland, AU +5.5%
- 4 Mandurah, AU +4.2%
- 5 Mackay, AU +3.7%
- 6 Tasmania, AU +3.7%
- 7 Darwin, AU +3.7%
- 8 Cairns, AU +3.6%
- 9 New South Wales, AU +3.6%
- 10 South Australia, AU +3.3%



● positive growth ● negative growth

INDUSTRY FLOWS

Professionals moving in and out of the Australia Mining & Metals industry

TALENT MOVED TO/FROM	TALENT LOST	TALENT GAINED
Construction	-673	501
Oil & Energy	-239	418
Info Tech & Services	-190	181
Mech. Or Industrial Eng	-176	164
Civil Engineering	-189	147

top 5 displayed based on total movement (in and out)

RECENT GRADUATE HIRING graduated within the last 3 yrs

Top Schools

that produced the largest number of recent grad hires

	Curtin Univ	409
	The Univ of Queensland	207
	The Univ of Western Au...	188
	UNSW Australia	165
	CQUniv	126

6,000+
recent graduates are currently employed in the Australia Mining & Metals industry

5.9%
of recent graduate hires hold a postgraduate degree

JOB MOBILITY

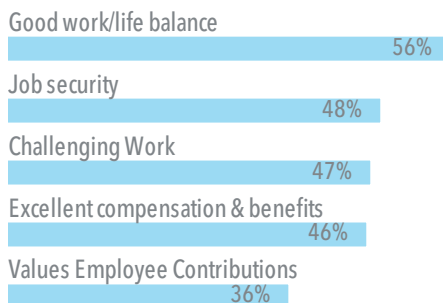
SOUGHT AFTER SKILLS

By companies hiring these professionals over the past year

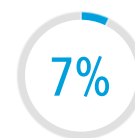
- 1 Mining
- 2 Minerals
- 3 Engineering
- 4 Management
- 5 Contract Management

WHAT CANDIDATES WANT IN A JOB

Percent (%) indicates how important the attribute is to these candidates



JOB SWITCHERS



7% of Mining & Metals industry professionals in Australia changed companies in the past year

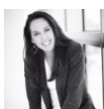
Australia Average (all industries): 8%

HOW THESE PROFESSIONALS ENGAGE WITH LINKEDIN

TOP INFLUENCERS based on popularity



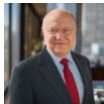
Ron Baker



Janine Allis



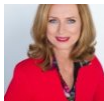
Anne Toth



Ian C. Read



Alan Joyce



Naomi Simson

MOST FOLLOWED COMPANIES by company size group

Under 500 employees

500-9,999 employees

10,000+ employees



POPULAR CONTENT TOPICS clicks+likes+comments+shares

Mineral Exploration



Iron Ore



Coal



Underground Mining



Employee Engagement



Confidence Building



Mining



Occupational Health



POPULAR GROUPS by volume

- 1 Mining Industry Professionals
- 2 Mining Australia
- 3 Mining: Underground
- 4 Coal Mining
- 5 Mining and Metals Professionals Globally

ENGAGEMENT STATS FOR THESE PROFESSIONALS

50%

People and Companies

50% used LinkedIn to learn what other colleagues are doing in the last month

58%

Seek Professional Insights

58% are staying up to date on industry discussions on LinkedIn in the last month

52%

Connect & Communicate

52% networked with other professionals on LinkedIn in the last month