

Connect LinkedIn Recruiter with Dynamics 365 for Talent: Attract

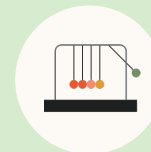
Link your accounts in a few simple steps



Introducing Recruiter System Connect

LinkedIn Recruiter System Connect (RSC) integrates LinkedIn Recruiter with your Dynamics 365 for Talent: Attract account to make your hiring process even simpler. By turning on RSC, you're authorizing the sharing of candidate, job, and application data across Recruiter and Dynamics 365 for Talent: Attract. It enables you to get up-to-date candidate information, boost collaboration, and access more applicant data in Recruiter and your ATS. See how to easily connect your two accounts on the next few pages.

Please note: *Recruiter System Connect is only compatible with LinkedIn Recruiter Corporate or LinkedIn Professional Services. You will also need the Dynamics 365 for Talent Comprehensive Hiring Add-On to use RSC with Attract.*



Save time now that you're connected



Connect at no additional cost



RSC is secure and GDPR compliant*



Easy setup for Admin

* To learn more about privacy, security, and GDPR compliance, download [Security and Privacy Overview: LinkedIn Talent Integrations](#).

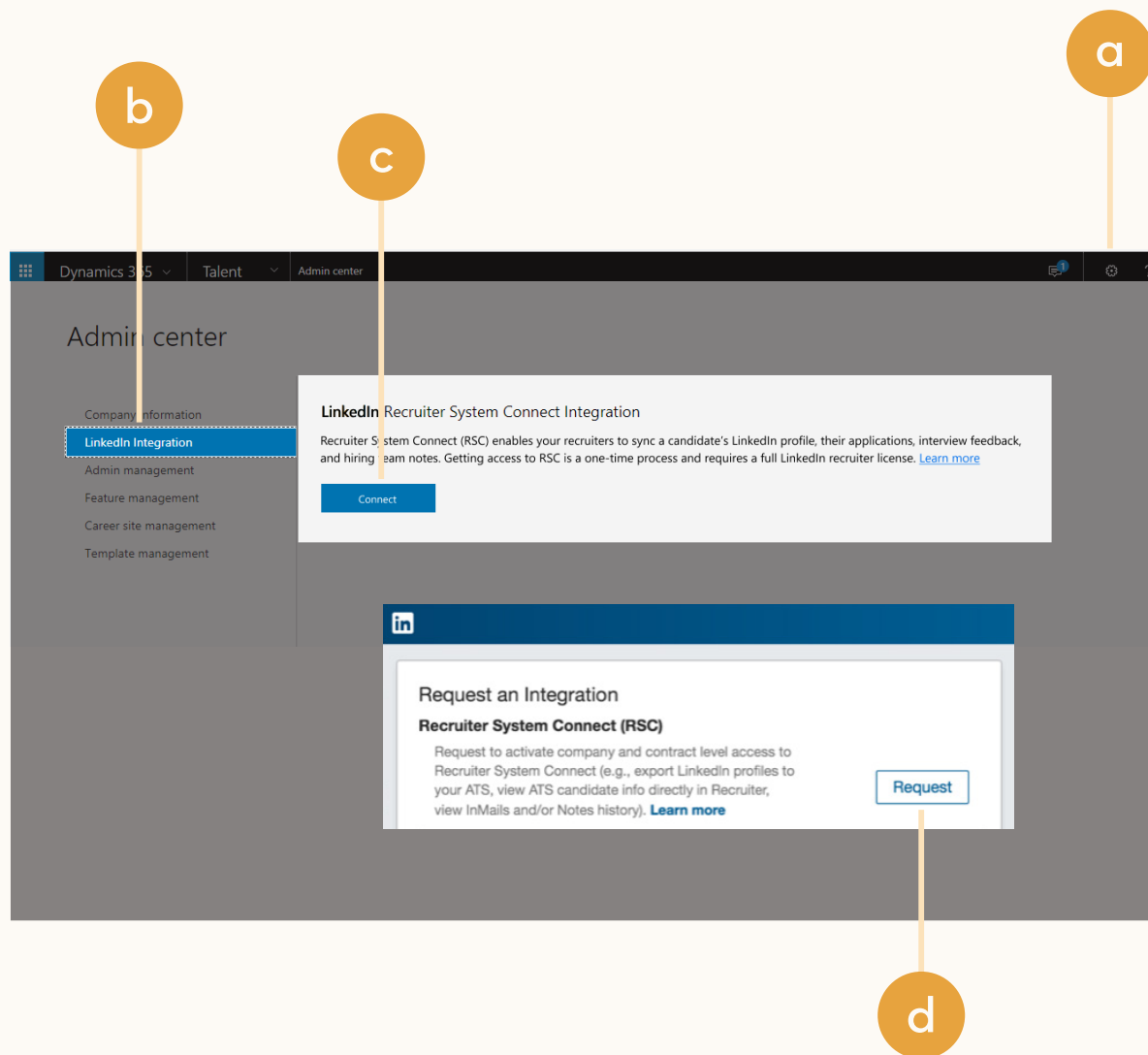
Step 1

Head into Dynamics 365 for Talent: Attract to begin setting up the integration.

Before you can connect your two systems, you must configure Contract Level Access or Company Level Access with your Attract instance. To complete the configuration process, you must work with the user who is an Admin on your Recruiter contract.

- a Sign in to Attract as an Admin and go to **“Admin center”**
- b Click the **“LinkedIn Integration”** tab
- c Click **“Connect”** to start the setup and be guided through the LinkedIn sign-in process
- d Click **“Request”** under the **“Recruiter System Connect”** section

After the integration is requested from Attract, it will show as **“Partner ready”** and is ready to be turned on from Recruiter Product settings. If you see **“Notify partner”** on this page, wait a few seconds, click **“Notify partner,”** then refresh the page. It should now show as **“Partner ready.”**



Step 2 Connect LinkedIn Recruiter to Dynamics 365 for Talent: Attract.

- a Click on your profile image in the top-right corner
- b Select **“Product settings”** from the dropdown menu
- c Click **“ATS integration”** on the left side of the screen
- d Scroll to the Attract section
- e Select **“Contract Level Access”** if you want to enable all Company Level Access features plus InMail history, Notes history, and the InMail stub profile access





The screenshot displays the LinkedIn Recruiter settings interface. The top navigation bar includes 'Recruiter', 'Projects', 'Jobs', and 'Reports', along with a search bar and user profile icon. The left sidebar contains 'Company Settings', 'Recruiting Settings', and 'Advanced' sections. The main content area is titled 'ATS Integration' and shows two sections for 'Dynamics 365 for Talent: Attract'. The top section is currently selected, and the bottom section is highlighted with a callout 'd'. The bottom section has two 'Contract Level Access' toggle switches, both of which are turned 'On' and highlighted with a callout 'e'. A user profile dropdown menu is open in the top right corner, with 'Product settings' highlighted and a callout 'b'. The user's name 'Ethan Burton' and title 'Senior Technical Recruiter at Freshing' are visible in the dropdown, with a callout 'a' pointing to the profile icon.

Step 3 Head back into Dynamics 365 for Talent: Attract to finish setting up.

- a Go back to Attract Admin center as an Attract Admin and select the **“LinkedIn Integration”** tab
- b You should now see the LinkedIn widget load showing **“Enabled”** with the selected access level turned on

The screenshot shows the Dynamics 365 Admin center interface. The top navigation bar includes 'Dynamics 365', 'Talent', and 'Admin center'. The left-hand navigation pane has several options, with 'LinkedIn Integration' highlighted in blue. The main content area is titled 'LinkedIn Recruiter System Connect Integration'. It contains a 'Connect' button and a text block explaining that Recruiter System Connect (RSC) enables syncing LinkedIn profiles and applications. Below this is a 'Request an Integration' widget for 'Recruiter System Connect (RSC)'. The widget text states: 'Request to activate company and contract level access to Recruiter System Connect (e.g., export LinkedIn profiles to your ATS, view ATS candidate info directly in Recruiter, view InMails and/or Notes history). [Learn more](#)'. To the right of the widget, a green box with a checkmark and the word 'Enabled' indicates the integration status. Two callout circles, 'a' and 'b', are overlaid on the image. Circle 'a' points to the 'LinkedIn Integration' tab in the left navigation pane. Circle 'b' points to the 'Enabled' status box in the integration widget.

With LinkedIn Recruiter and Dynamics 365 for Talent: Attract working together, you can:

-  Get the same candidate data in both Dynamics 365 for Talent: Attract and Recruiter, saving you time and keeping you up to date wherever you're working
-  View a candidate's LinkedIn profile with Dynamics 365 for Talent: Attract and easily see which candidates are already in your Dynamics 365 for Talent: Attract account
-  See all Recruiter notes and InMail messages in Dynamics 365 for Talent: Attract for a complete view of your candidate interactions
-  Automatically create a profile within Dynamics 365 for Talent: Attract when a candidate responds to an InMail message

