



Connect Cornerstone with LinkedIn Recruiter

Link your accounts in a few simple steps.





Easy setup
for Admins



Connect at no
additional cost



RSC is secure and
GDPR compliant*



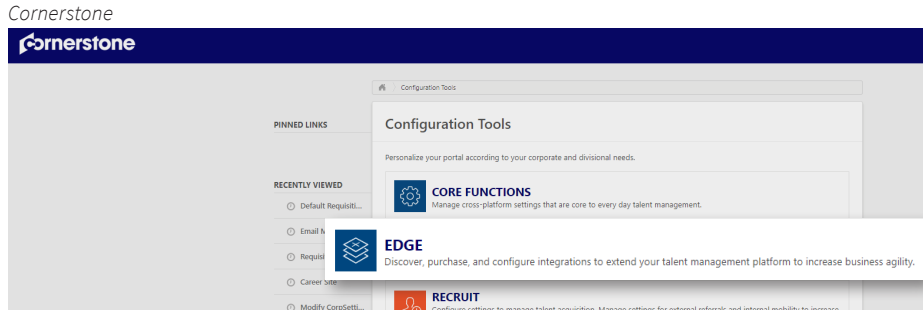
Save time now that
you're connected

Introducing Recruiter System Connect

LinkedIn Recruiter System Connect (RSC) integrates LinkedIn Recruiter with your Cornerstone account to make your hiring process even simpler. By turning on RSC, you're authorizing the sharing of some candidate, job, and application data across Recruiter and Cornerstone. It enables you to get up-to-date candidate information, boost collaboration, and access more applicant data in Recruiter. See how to easily connect your two accounts on the next few pages.

Please note: Recruiter System Connect is only compatible with LinkedIn Recruiter Corporate or LinkedIn Professional Services.

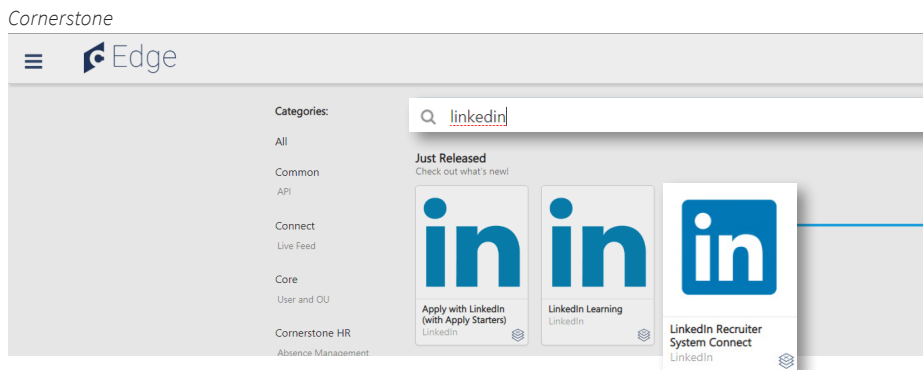
* To learn more about privacy, security, and GDPR compliance, download [Security and Privacy Overview: LinkedIn Talent Integrations](#).



Sign in to your Cornerstone account. Click the navigation symbol in the top right corner of the home screen. Click the menu, expand **“Admin”**, and select **“Tools”**.

This will open the list of **“Configuration Tools”** available within your Cornerstone account. Select **“Edge”** from the list.

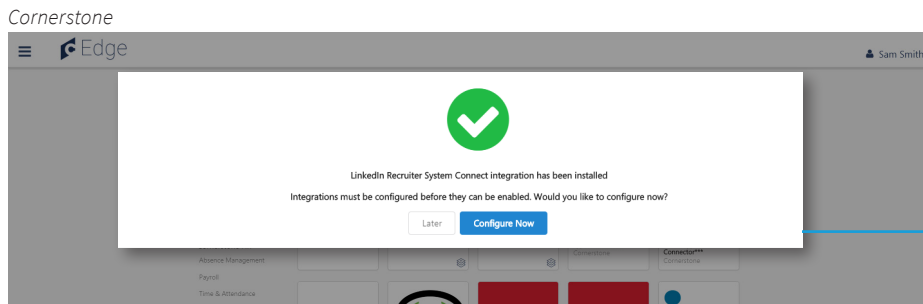
Click **“Marketplace”** and a new tab will open.



Within it, browse the integrations available or search by keywords. Search or find **“LinkedIn Recruiter System Connect”** among the integrations available.

Once you click the module for **“LinkedIn Recruiter System Connect”**, click **“Install”**.

From there, you’ll be provided with more information on what is required to complete the integration as well as the terms and conditions.



Acknowledge that you have read and agree to terms and conditions by selecting the check box and continue with your installation.

A pop-up window will confirm the integration has been installed and you’ll be prompted to start the configuration process now or save it for later. Select **“Configure now”**.

If you're not already signed in to your LinkedIn account, enter your LinkedIn credentials and select your Recruiter contract. Click the **"Request"** button. Once access has been confirmed, the button will show as **"Partner ready"**.

Cornerstone

The screenshot shows the 'LinkedIn Recruiter System Connect' page within the Cornerstone Edge application. The page has a header with a menu icon and the 'Edge' logo. Below the header, there's a navigation bar with a 'Back' button, the LinkedIn logo, the title 'LinkedIn Recruiter System Connect', and a 'Patch' button. A red banner at the top of the main content area says 'Uninstall and Remove Integration'. Below this, there are tabs for 'Setup', 'Transaction History', and 'Getting Started'. The 'Setup' tab is active, showing a 'Setup Instructions' section. A large modal window is open in the foreground with the title 'Request an Integration' and subtitle 'Recruiter System Connect (RSC)'. The modal text states: 'Recruiter System Connect features enabled. With Recruiter System Connect you can: export LinkedIn profiles to your ATS, view ATS candidate info directly in Recruiter, view InMails and/or Notes history etc. [Learn more](#)'. In the bottom right corner of the modal, there is a button with an exclamation mark icon and the text 'Partner ready'.

Cornerstone

Seat holders Features Jobs Reporting **ATS**

Cornerstone Parent App Dev (CSOD - qa1-esc-rsc2-patch)
6312086

Recruiter System Connect (RSC) [Learn More](#)

Contract Level access (for every seat on this contract)
Enable access to all RSC features (e.g., export LinkedIn profiles to your ATS, view ATS candidate info, including InMails and Notes history). To disable automatic collection please contact LinkedIn Support.

Company Level access (for every contract in your company)
Enable access to company-level RSC features (e.g., export LinkedIn profiles to your ATS, view ATS candidate info directly in Recruiter). Every seat within your company will see aggregated information (across all contracts) in Recruiter, except InMail and Notes history.

Activated ^

— Select the “**ATS**” tab, and enable both the Company Level and Contract Level access toggles.

Next, go to LinkedIn Recruiter and select the appropriate contract Admin settings.

Cornerstone

Request an Integration

Recruiter System Connect (RSC)

Recruiter System Connect features enabled. With Recruiter System Connect you can: export LinkedIn profiles to your ATS, view ATS candidate info directly in Recruiter, view InMails and/or Notes history etc. [Learn more](#)

✓ Enabled

— Once you’ve enabled both, you can close the LinkedIn Recruiter tab and navigate back to Cornerstone. After refreshing the LinkedIn Recruiter System Connect configuration page in Edge, the status of the integration will change to “**Enabled**” and you’ll be all set. Data will begin syncing between the two systems automatically.

With LinkedIn Recruiter and Cornerstone working together:



Get the same candidate data in both Cornerstone and Recruiter, saving you time and keeping you up to date wherever you're working.



View a candidate's LinkedIn profile with Cornerstone and easily see which candidates are already in your Cornerstone account.



See all Recruiter notes and InMail messages in Cornerstone for a complete view of your candidate interactions.



When a candidate responds to an InMail message, a profile is created within Cornerstone.



Products and insights
talent.linkedin.com



Connect with us on LinkedIn
linkedin.com



Get started
cornerstoneondemand.com



Learn more
help.cornerstoneondemand.com
help.linkedin.com

For more information on how to use LinkedIn Recruiter System Connect, contact your LinkedIn representative.