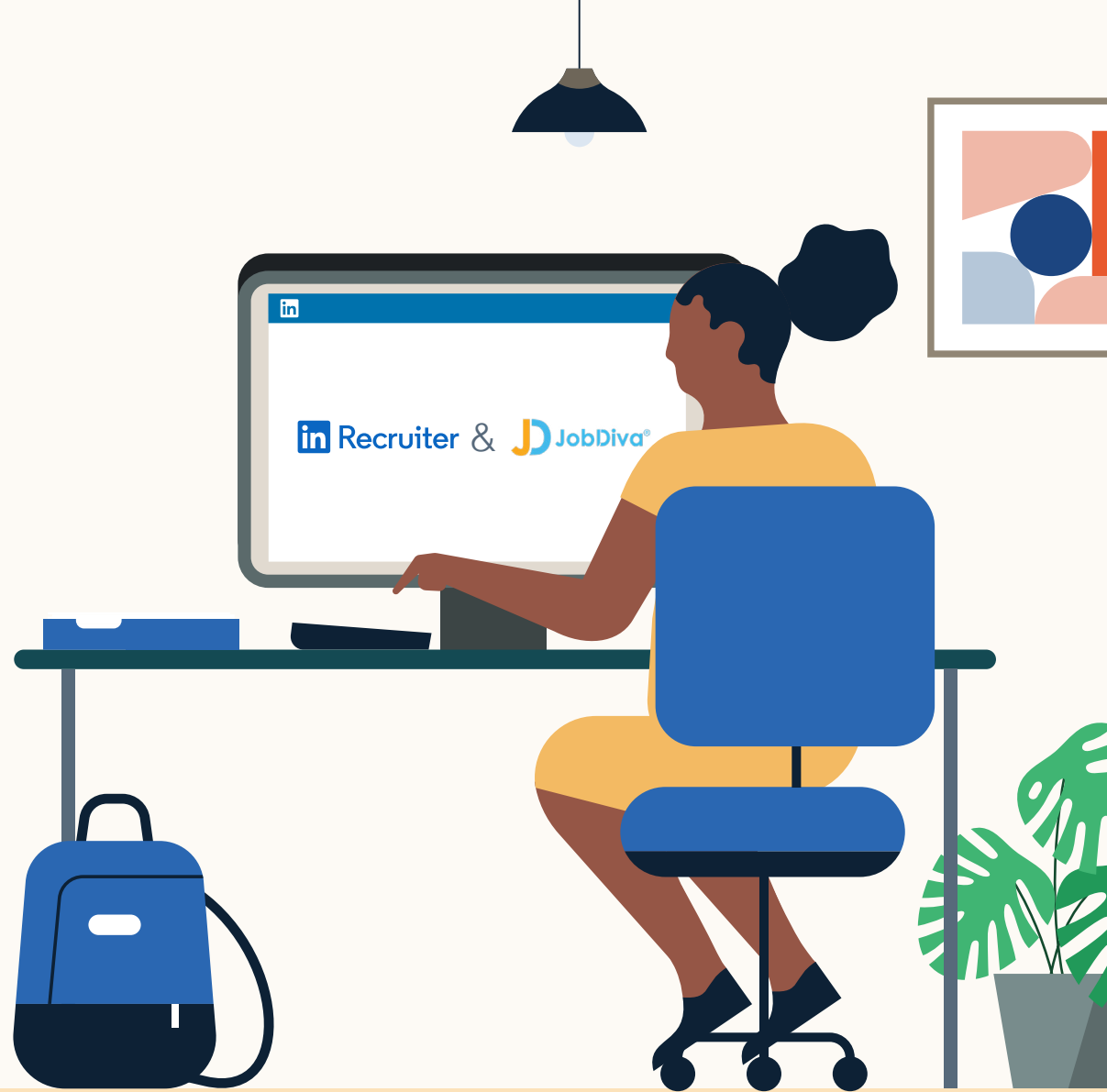


# Connect LinkedIn Recruiter with JobDiva

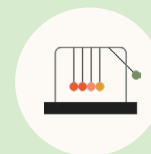
Link your accounts in a few simple steps



# Introducing Recruiter System Connect

LinkedIn Recruiter System Connect (RSC) integrates LinkedIn Recruiter with your JobDiva account to make your hiring process even simpler. By turning on RSC, you're authorizing the sharing of candidate, job, and application data across Recruiter and JobDiva. It enables you to get up-to-date candidate information, boost collaboration, and access more applicant data in Recruiter and your ATS. See how to easily connect your two accounts on the next few pages.

**Please note:** *Recruiter System Connect is only compatible with LinkedIn Recruiter Corporate or LinkedIn Professional Services.*



Save time now that you're connected



Connect at no additional cost



RSC is secure and GDPR compliant\*



Easy setup for Super Users

\* To learn more about privacy, security, and GDPR compliance, download [Security and Privacy Overview LinkedIn Talent Integrations](#).

# Step 1 Activate RSC in JobDiva.

a

- Visit **“Settings”** within JobDiva as a Super User, select **“My Team”**, and then select **“Profile”**
- Click **“LinkedIn Integration Manager”** under the **“Features”** panel to open a new window where the integration can be managed
- Authorize the integration under the **“Get Started”** menu by clicking **“Request Authorization Link”**

b

- The page will update, explaining that an email has been sent to the email account associated with your login
- Click the link in the email to indicate that you authorize JobDiva to sync data between JobDiva and Recruiter

## JobDiva® LinkedIn Integration

Get Started | Sync Dashboard

The LinkedIn Recruiter System Connect integration with JobDiva is a data-transparency enablement platform. LinkedIn Recruiter System Connect (RSC) gives applicant tracking systems such as JobDiva the ability to save time and streamline the recruiting workflow by integrating consistent, real-time data. Enhancing the recruiter's experience, the Recruiter System Connect integration allows JobDiva users to view up-to-date Candidate Records and see more applicant data directly in LinkedIn Recruiter.

By enabling this integration, the client's organization agrees to synchronize data between JobDiva's framework and infrastructure and those of LinkedIn. JobDiva will be transferring your data on your behalf to LinkedIn Recruiter System Connect. The type of JobDiva data synchronized includes your Jobs, Submittals, Interviews, Hires, Notes, Applications and more.

Please click 'Request Authorization Link' below, and note that you'll be receiving an email to approve.

a

Request Authorization Link

## JobDiva® LinkedIn Integration

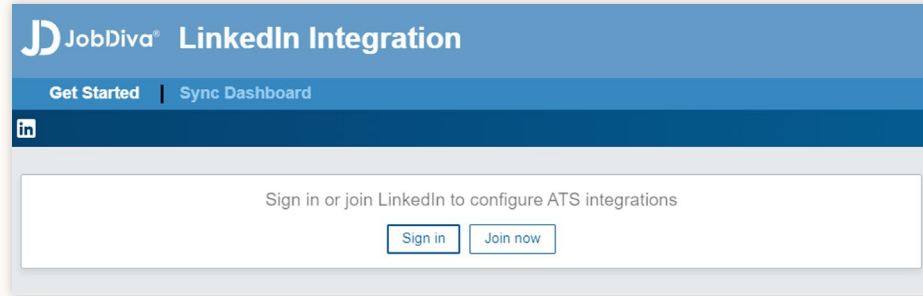
Get Started | Sync Dashboard

Please check your email for the JobDiva-LinkedIn RSC Integration Authorization. You will need to click on the link in the email to approve and authorize before proceeding.

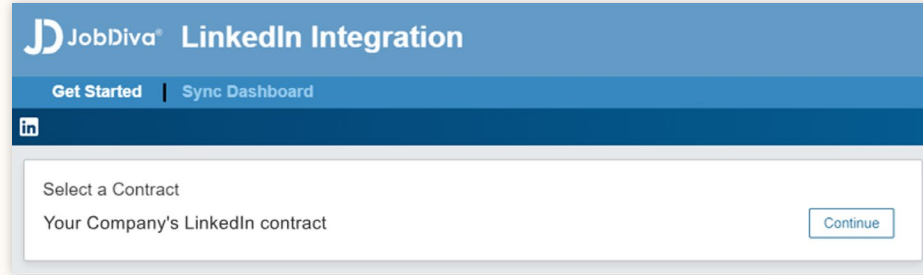
b

## Step 2 Request Recruiter System Connect.

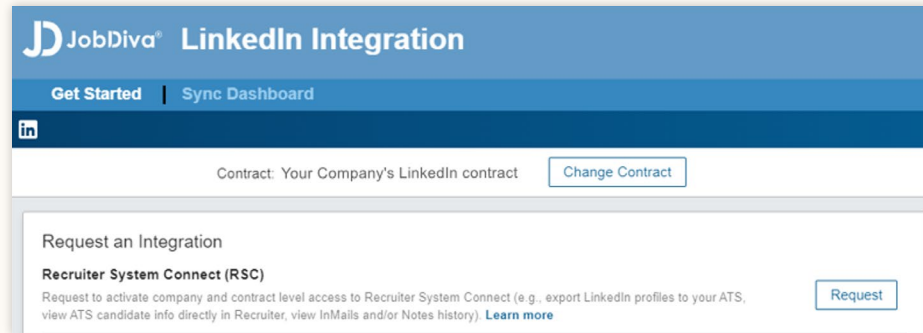
- a Click **“Sign in”** to sign in to LinkedIn from JobDiva’s LinkedIn Integration Manager.
- b Once you are signed in, any LinkedIn contracts associated with those credentials will be shown. Click **“Continue”** next to the contract you wish to sync.
- c The window will refresh to show the RSC integration option. Click **“Request”** to proceed.



a



b



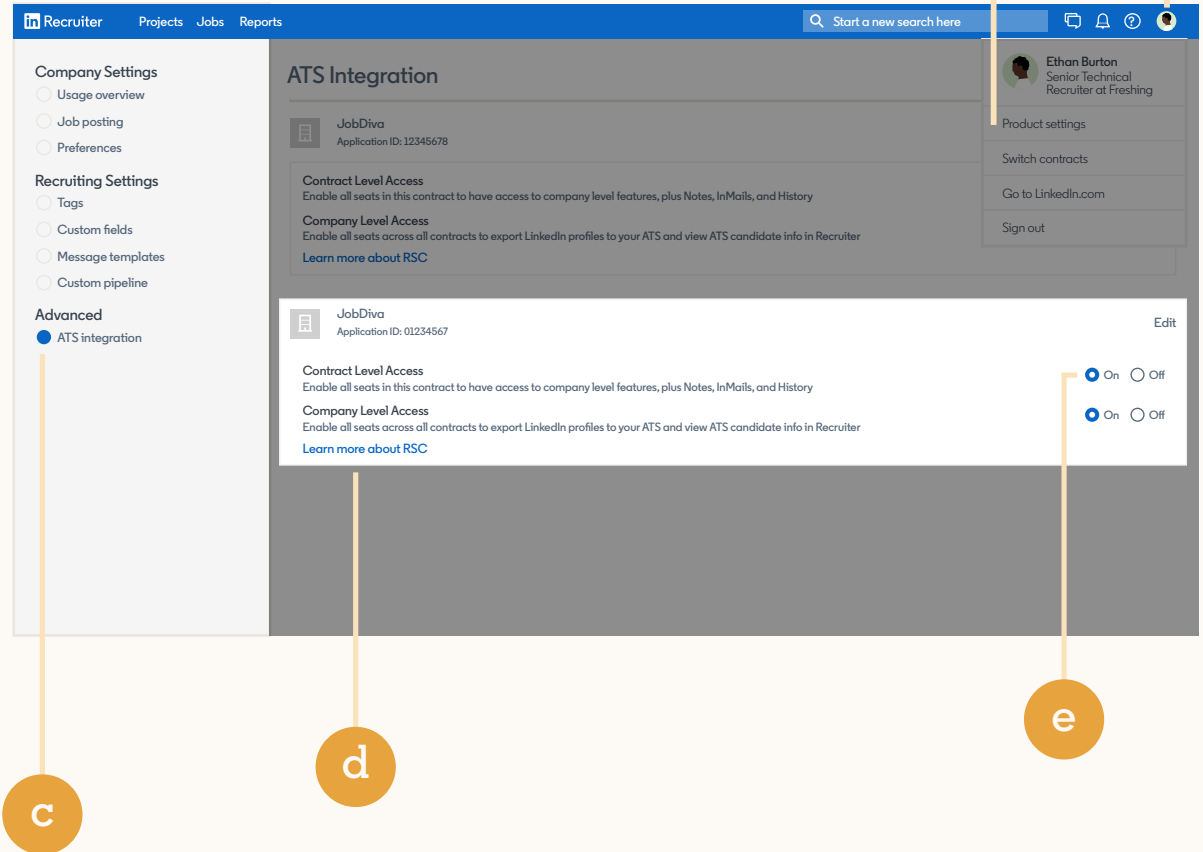
c

## Step 3 Connect LinkedIn Recruiter to JobDiva.





- a Click your profile image in the top-right corner
- b Select **“Product settings”** from the dropdown menu
- c Click **“ATS integration”** on the left side of the screen
- d Scroll to the JobDiva section
- e Choose to connect either Contract Level Access, Company Level Access, or both by selecting **“On”** for the desired access

For details on what each of these access levels means, click the “Learn more about RSC” link in LinkedIn Recruiter.

**Note:** Admins must enable Contract Level Access from their specific dashboard (if you have multiple LinkedIn Recruiter dashboards).



## With LinkedIn Recruiter and JobDiva working together, you can:

-  Get the same candidate data in both JobDiva and Recruiter, saving you time and keeping you up to date wherever you're working
-  View a candidate's LinkedIn profile with JobDiva and easily see which candidates are already in your JobDiva account
-  See all Recruiter notes and InMail messages in JobDiva for a complete view of your candidate interactions
-  Automatically create a profile within JobDiva when a candidate responds to an InMail message

