



Connect Cornerstone with LinkedIn Recruiter

Link your accounts in a few simple steps.





Easy setup
for Admins



Connect at no
additional cost



RSC is secure and
GDPR compliant*



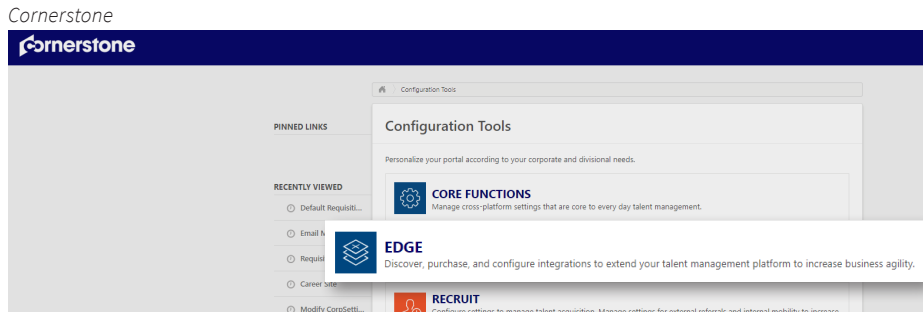
Save time now that
you're connected

Introducing Recruiter System Connect

LinkedIn Recruiter System Connect (RSC) integrates LinkedIn Recruiter with your Cornerstone account to make your hiring process even simpler. By turning on RSC, you're authorizing the sharing of some candidate, job, and application data across Recruiter and Cornerstone. It enables you to get up-to-date candidate information, boost collaboration, and access more applicant data in Recruiter. See how to easily connect your two accounts on the next few pages.

Please note: Recruiter System Connect is only compatible with LinkedIn Recruiter Corporate or LinkedIn Professional Services.

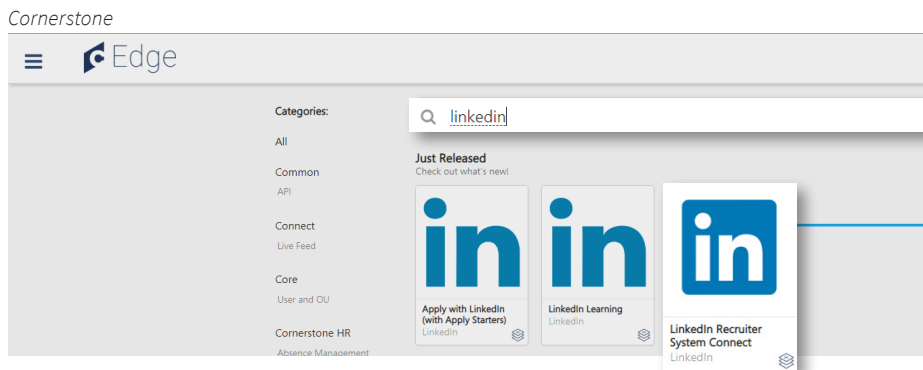
* To learn more about privacy, security, and GDPR compliance, download [Security and Privacy Overview: LinkedIn Talent Integrations](#).



Sign in to your Cornerstone account. Click the navigation symbol in the top right corner of the home screen. Click the menu, expand **“Admin”**, and select **“Tools”**.

This will open the list of **“Configuration Tools”** available within your Cornerstone account. Select **“Edge”** from the list.

Click **“Marketplace”** and a new tab will open.

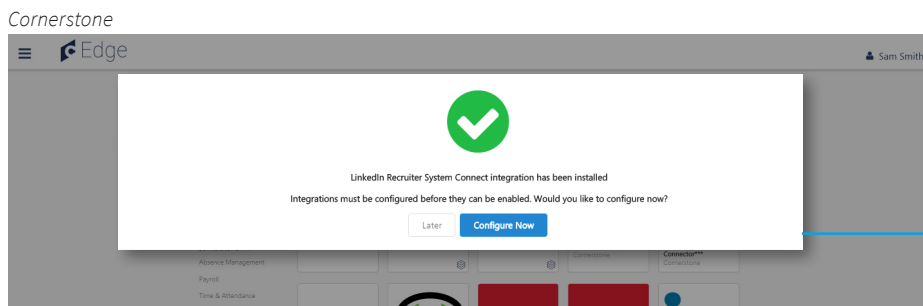


Within it, browse the integrations available or search by keywords. Search or find **“LinkedIn Recruiter System Connect”** among the integrations available.

Once you click the module for **“LinkedIn Recruiter System Connect”**, click **“Install”**.

From there, you’ll be provided with more information on what is required to complete the integration as well as the terms and conditions.

Acknowledge that you have read and agree to terms and conditions by selecting the check box and continue with your installation.



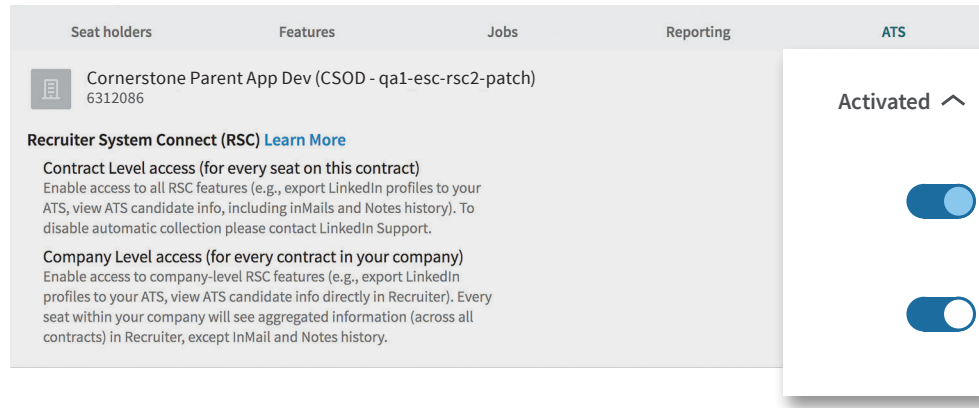
A pop-up window will confirm the integration has been installed and you’ll be prompted to start the configuration process now or save it for later. Select **“Configure now”**.

If you're not already signed in to your LinkedIn account, enter your LinkedIn credentials and select your Recruiter contract. Click the **“Request”** button. Once access has been confirmed, the button will show as **“Partner ready”**.

Cornerstone

The screenshot displays the LinkedIn Recruiter System Connect interface. At the top left, there is a hamburger menu icon and the 'Edge' logo. The main header area includes a 'Back' button with a left arrow, the LinkedIn logo, the text 'LinkedIn Recruiter System Connect', and a 'Patch' button. Below the header, a red bar contains the text 'Uninstall and Remove Integration'. Underneath, there are tabs for 'Setup', 'Transaction History', and 'Getting Started'. A 'Setup Instructions' button is visible. The main content area features a blue LinkedIn logo bar. Below this, a white box titled 'Request an Integration' contains the text: 'Recruiter System Connect (RSC) Recruiter System Connect features enabled. With Recruiter System Connect you can: export LinkedIn profiles to your ATS, view ATS candidate info directly in Recruiter, view InMails and/or Notes history etc. [Learn more](#)'. A 'Partner ready' button with an exclamation mark icon is located in the bottom right corner of this box.

Cornerstone



Cornerstone Parent App Dev (CSOD - qa1-esc-rsc2-patch)
6312086

Recruiter System Connect (RSC) [Learn More](#)

Contract Level access (for every seat on this contract)
Enable access to all RSC features (e.g., export LinkedIn profiles to your ATS, view ATS candidate info, including InMails and Notes history). To disable automatic collection please contact LinkedIn Support.

Company Level access (for every contract in your company)
Enable access to company-level RSC features (e.g., export LinkedIn profiles to your ATS, view ATS candidate info directly in Recruiter). Every seat within your company will see aggregated information (across all contracts) in Recruiter, except InMail and Notes history.

Activated ^

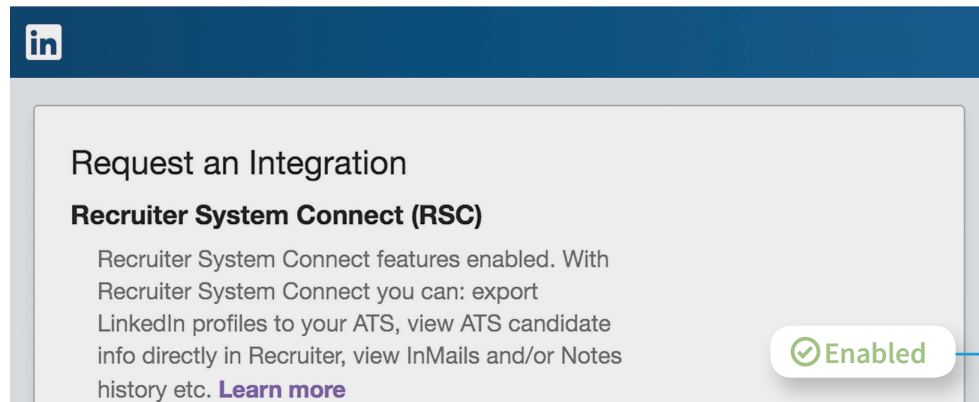
Contract Level access (for every seat on this contract)

Company Level access (for every contract in your company)

Next, go to LinkedIn Recruiter and select the appropriate contract Admin settings.

Select the **“ATS”** tab, and enable both the Company Level and Contract Level access toggles.

Cornerstone



Request an Integration

Recruiter System Connect (RSC)

Recruiter System Connect features enabled. With Recruiter System Connect you can: export LinkedIn profiles to your ATS, view ATS candidate info directly in Recruiter, view InMails and/or Notes history etc. [Learn more](#)

Enabled

Once you've enabled both, you can close the LinkedIn Recruiter tab and navigate back to Cornerstone. After refreshing the LinkedIn Recruiter System Connect configuration page in Edge, the status of the integration will change to **“Enabled”** and you'll be all set. Data will begin syncing between the two systems automatically.

Cornerstone

Entity Type	Sync With LinkedIn		Get Entities To Sync	
	Job Interval	Job Status	Job Interval	Job Status
Candidates	Every 30 minutes	Job completed at 9:35:06 am	Every 20 minutes	Job completed at 9:40:03 am
Candidate Notes	Every 30 minutes	Job completed at 9:30:01 am	Every 20 minutes	Job completed at 9:40:02 am
Jobs	Every 30 minutes	Job completed at 9:32:04 am	Every 20 minutes	Job completed at 9:40:01 am
Job Applications	Every 30 minutes	Job completed at 9:30:04 am	Every 20 minutes	Job completed at 9:40:03 am
Job Application Stages	Every 30 minutes	Job completed at 9:30:02 am	Every 20 minutes	Job completed at 9:40:02 am
Interview Feedback	Every 30 minutes	Job completed at 9:30:04 am	Every 20 minutes	Job completed at 9:40:01 am
Maintenance	N/A	Job completed at 1:05:34 am	N/A	N/A

Once the integration is enabled, select the **“Sync”** tab to check the status of the data sync. Typically, data syncing starts about an hour after enabling, but it can take longer for accounts with a large number of candidate records.

Cornerstone

Cornerstone User ID	First Name	Last Name	Email	***RecruiterSeatUm***	Active	Modify
crstnid	Cornerstone	OnDemand	fakename@test.co	urn:li:seat:111792941	<input checked="" type="checkbox"/>	

The admin will be able to add Cornerstone seat holders to access Recruiter System Connect integration in the **“Manage Users”** tab once data has been synced.

A seat holder’s first name, last name, email address, and seat ID provided by LinkedIn will appear. The admin can click the yellow pencil edit icon to enter the Cornerstone User ID of their recruiter who corresponds to the LinkedIn Recruiter seat holder listed in the row. Once added, click the green save icon to save any changes.

If the seat holder has their settings configured to not share their information, their name and/or email address may not be visible for the admin to add the seat holder to access Recruiter System Connect integration. In these instances, direct the seat holder to reconfigure the following settings – even temporarily – to support the mapping.

- Allow third-party data sharing in your [LinkedIn profile privacy settings](#)
- Enable [basic visibility](#) for your profile's public visibility

The image shows a screenshot of the LinkedIn 'Privacy' settings page. The page is titled 'Profile visibility off LinkedIn' and includes a toggle switch set to 'Yes'. A callout box highlights the 'Public profile settings' section, which states: 'You control your profile and can limit what is shown on search engines and other off-LinkedIn services. Viewers who aren't signed in to LinkedIn will see all or some portions of the profile view displayed below.' Another callout box highlights the 'Edit Content' section, which states: 'This is your public profile. To edit its sections, update your profile.' A third callout box highlights the 'Edit Visibility' section, which states: 'You control your profile's appearance for viewers who are not logged-in members. Limits you set here affect how your profile appears on search engines, profile badges, and permitted services like Outlook.' The 'Edit Visibility' section includes a toggle switch for 'Your profile's public visibility' which is currently set to 'Off'.

With LinkedIn Recruiter and Cornerstone working together:



Get the same candidate data in both Cornerstone and Recruiter, saving you time and keeping you up to date wherever you're working.



View a candidate's LinkedIn profile with Cornerstone and easily see which candidates are already in your Cornerstone account.



See all Recruiter notes and InMail messages in Cornerstone for a complete view of your candidate interactions.



When a candidate responds to an InMail message, a profile is created within Cornerstone.



Products and insights
talent.linkedin.com



Connect with us on LinkedIn
linkedin.com



Get started
cornerstoneondemand.com



Learn more
help.cornerstoneondemand.com
help.linkedin.com

For more information on how to use LinkedIn Recruiter System Connect, contact your LinkedIn representative.